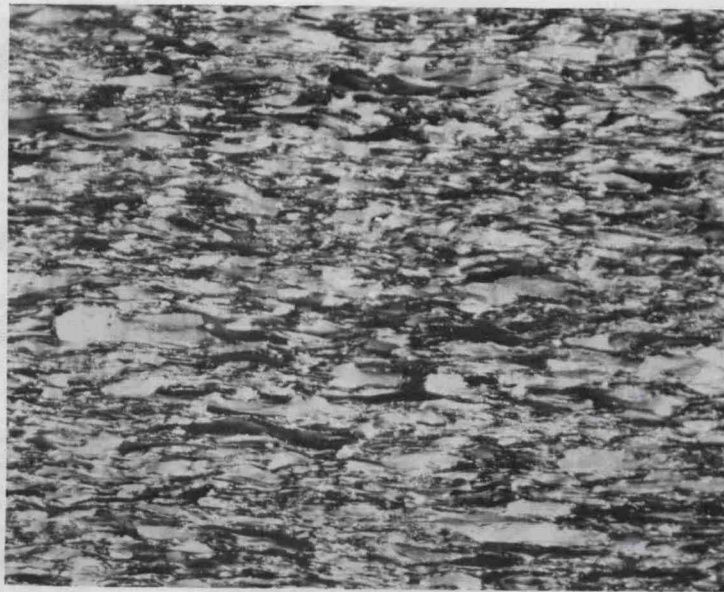


Trial	377	417	461	495
Extrusion Ratio	2.5:1	2.5:1	3.3:1	4:1
Temperature	80 F	500 F	80 F	80 F
Billet Lubricant	L38	L38	L38	L38
Die	Standard	Standard	Controlled Relief	Double Reduction (Die C)

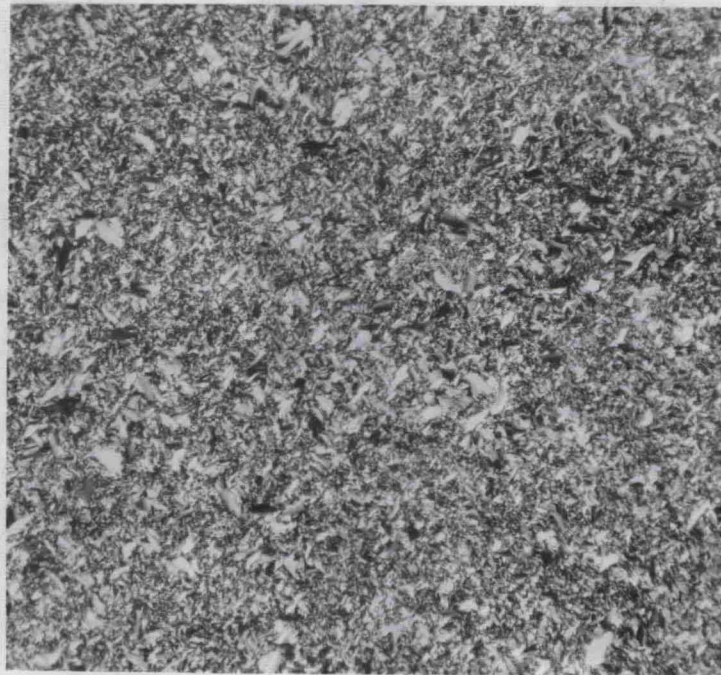
FIGURE 5. INFLUENCE OF DIE DESIGN ON CRACKING IN HYDROSTATIC EXTRUSIONS OF BERYLLIUM



100X

a. Longitudinal

6B551



100X

b. Transverse

6B007

FIGURE 6. PHOTOMICROGRAPHS OF BERYLLIUM COLD EXTRUDED AT A RATIO OF 4:1 BY HYDROSTATIC EXTRUSION WITHOUT FLUID COUNTERPRESSURE